



Faith, Hope, and Love  
Global Ministries

2025 Annual Appeal

## Support what God is doing among refugees and other oppressed people globally

---



*Tim meets and prays with the family of a Karen man, who risks his life to bring the Gospel to people in war-torn Myanmar*

---

Greetings!

2025 was a very fruitful year of ministry for Faith, Hope, and Love Global in Myanmar, among the refugees along the Myanmar-Thai border, and in war-torn Eastern Congo. By God's grace, we were able to teach, preach to, and counsel over 5500 people, pushing the total number served to over 100,000 people since FHLGM was founded in 2008. In addition, I wrote ten biblical reflections, which reached over 11 million people via social media, where readers can find them in English, Burmese, French, and Swahili, with over 735,000 people actively engaging in the posts on Facebook alone. Separately, nearly 65,000 people visited the [fhlglobal.org](https://fhlglobal.org) website as well, where they can find resources in many different languages.

Most of the people we are serving are living in war zones and refugee camps, often under unimaginable circumstances, and sometimes with few resources to rebuild their lives and homes after an attack by a fighter jet or hostile ground forces. But God has chosen us to teach, inspire, and encourage them in many ways.

As just one example of how God is using our ministries to encourage the people we serve, I was particularly touched by this email that we received this past week from Rev. Dr. La Rip Marip, Vice President and Associate Professor at Myanmar Institute of Theology (MIT), where I have been teaching for much of the past 18 years:

*In this Advent season, I have been rethinking John 1:14 "The Word became flesh and dwelt among us." The heart of this season is that God chose to draw near to us. God became incarnate in Jesus, who is called Immanuel—God with us. We have experienced God with us through you, through your unceasing prayers and support. You could have stayed distant, yet you did not. You remembered the people of Myanmar and came closer through your mission. In this way, I understand the meaning of Immanuel more deeply.*



*The view toward the Myanmar mountains from a newly built mission church, pastored by one of Tim's former KHTS Karen students. Pastor Eh K Paw Soe spends his time demonstrating the love of Christ to those who don't know God in this small town right on Thai side of the Thai-Myanmar border by tutoring youth and providing programs at the church.*

God has given us unique opportunities to teach and serve some of the most disadvantaged and under-resourced people in the world. Most of them are our brothers and sisters in Christ, who are deeply grateful that those of us in the West see their suffering, care, and are doing what we can to help them to find

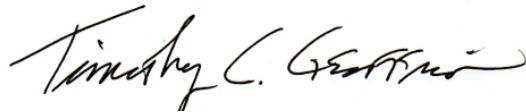


their footing, educate their leaders, and teach them how to better draw on God's strength amid so much suffering.

Will you help us to keep developing our ministries and reach even more people, God-willing, in the year ahead? If you have already given this year, thank you. If you are still praying for God's leading for making your yearend gifts, please know that your donation now will help considerably.

Thank you for concern for these vulnerable, mistreated, and disadvantaged children of God, and for praying with us for them and our ministries. Your support makes an immense difference.

Blessings on you this New Year,



President, Faith, Hope, and Love Global Ministries  
Visiting Professor at Teaching Minister



## Ways to Give

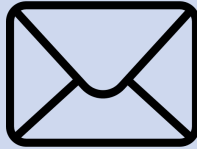
Right now, our biggest financial need is support for our General Operating expenses. We are revamping our website to make our resources accessible and available in multiple languages and planning on bringing more MIT students out of Myanmar to study with Tim in person in May and October, in addition to all our regular programs. It's also possible to designate your donation for Southeast Asia Humanitarian aid, if you'd like your gift to go toward necessities such as rice, oil, blankets, and the like for those in need

There are many ways to make a donation. Click on the option below that suits you best. You will be led to instructions on how to make your gift easily and smoothly. We appreciate every gift, big or small. Whatever donation springs from the the care, love, and generosity in your heart will be the perfect amount, and God will bless it for the sake of those we are serving.

Please note: New IRS rules require that any donations made by mail must be postmarked no later than December 31, no matter what date is on the check itself.



Online



By Mail



Stock Transfer

### Become a Monthly Donor!

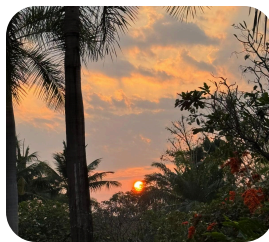
One more idea! PayPal makes it fast and easy to sign up to become a Faith, Hope and Love Global monthly supporter. Through monthly giving you can support the ongoing costs to operate our ministry all year long. With the flexibility of monthly giving you can set your once a month contribution amount anywhere from \$10-\$500 a month!

Donate Now

## Biblical Reflections from 2025



*Do the Good Thing*  
Micah 6:8



*The Light of Day*  
Why keeping our eyes on  
Jesus is so helpful



*What Kind of Person do  
You want to be?*  
Charge to Kawthoolei Hope  
Theological Seminary  
graduates (March 30, 2025)



*A Time to Grieve*  
Holy Week



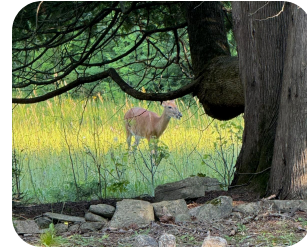
*Coping with  
Overwhelming Distress*  
Part One: Self-Compassion

*The Journey to Joy*  
How Jesus can help you  
get back on your feet



*Coping with  
Overwhelming Distress*  
Part Two: Be Constructive

*Don't Give Up*  
Why Joseph refused to act  
like a victim



*Coping with  
Overwhelming Distress*  
Part Three: Be Hopeful

Find all of Tim's Biblical Reflections and writing by following one of the links below!

[Spirit-ledleader.com](http://Spirit-ledleader.com)

[Facebook](#)

## 2025 E-newsletters

---

February:  
**"Time to Pull Out the Stops"**

---



---

April:  
**"Crisis in Myanmar & the  
Borderlands" (Part 1 of 3)**

---



---

May:  
**"Crisis in Myanmar & the  
Borderlands" (Part 2 of 3)**

---





---

June:  
**"Crisis in Myanmar & the  
Borderlands" (Part 3 of 3)**

---



---

August:  
**"Coping with Overwhelming  
Distress"(Part 1 of 3)**

---



---

September:  
**"Coping with Overwhelming  
Distress" (Part 2 of 3)**

---



---

October:  
**"Coping with Overwhelming  
Distress" (Part 3 of 3)**

---



---

November:  
**"So Much to be Thankful For!"**

---



---

Find out more about Faith, Hope, and  
Love Global Ministries

[Visit our website](#)



[Unsubscribe](#) | [Update Profile](#) | [Constant Contact Data Notice](#)



Try email marketing for free today!